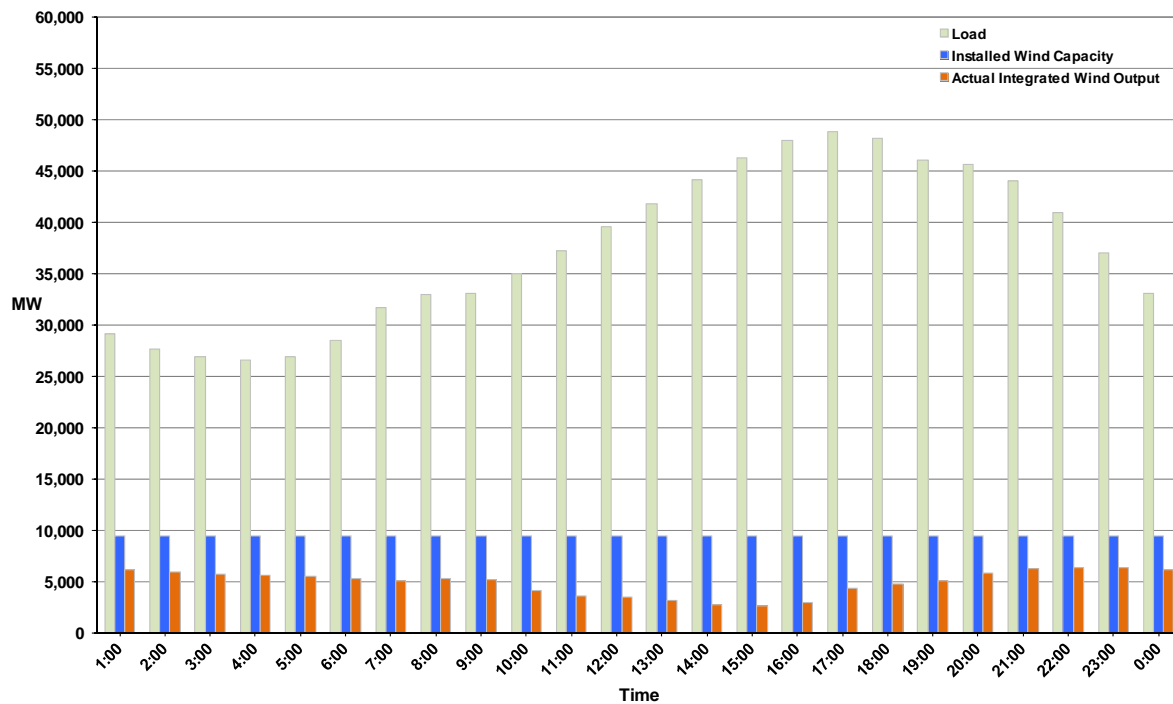




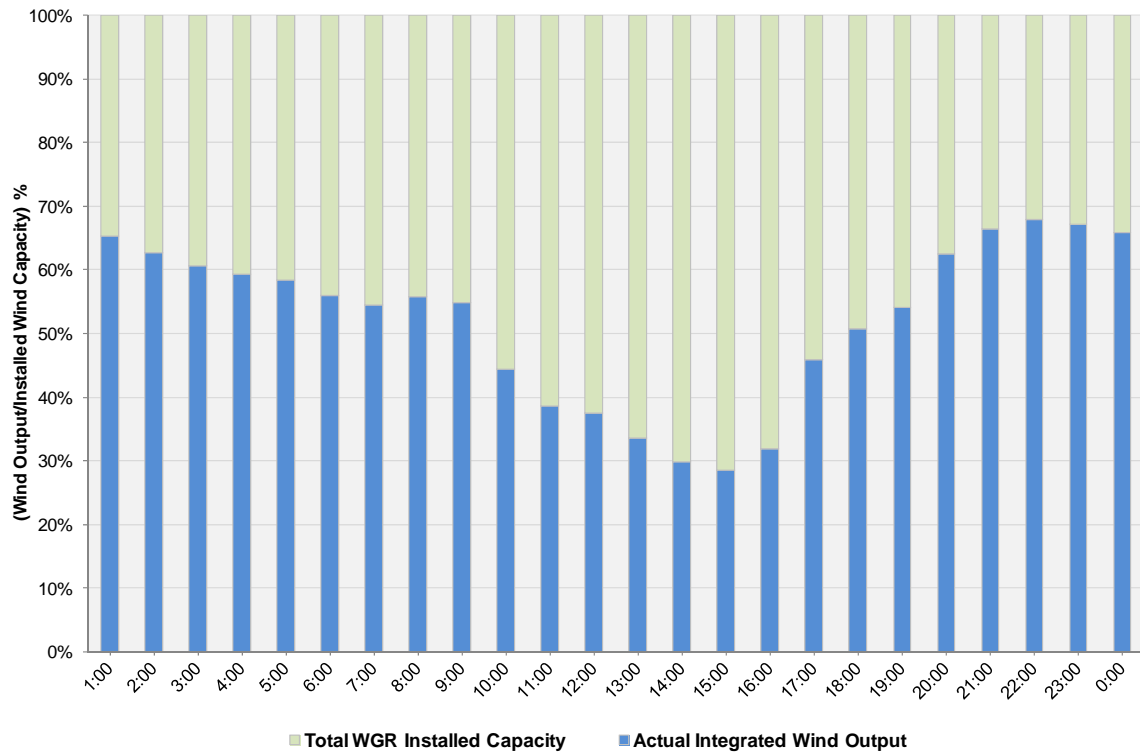
ERCOT Grid Operations Wind Integration Report: 10/17/11

Peak Load	48,860 MW
Load Peak Hour	17
Wind over Peak	4,327 MW
Wind Record 10/07/11	7,400 MW
Max Wind Value	6,531 MW
Wind Peak Time	22:20
Wind Integration %	17.28%

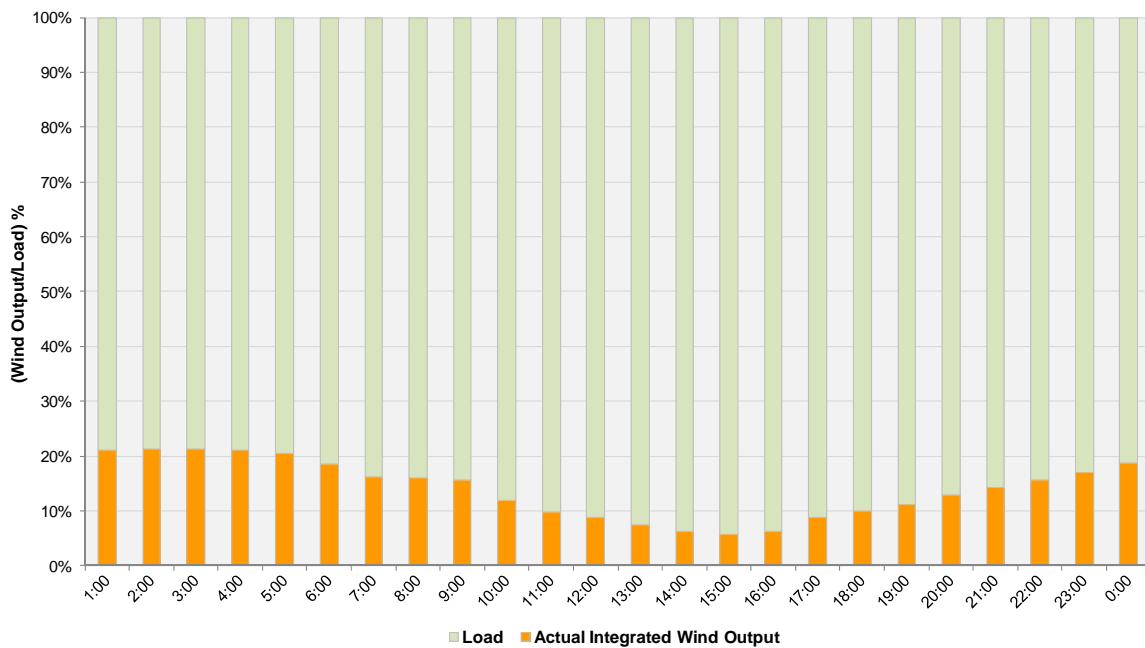
Hourly Average Actual Load vs. Actual Wind Output
10-17-2011



Actual Wind Output as a Percentage of the Total Installed Wind Capacity
10-17-2011



Actual Wind Output as a Percentage of the ERCOT Load
10-17-2011



ERCOT Load vs. Actual Wind Output 10/10/2011 - 10/17/2011

